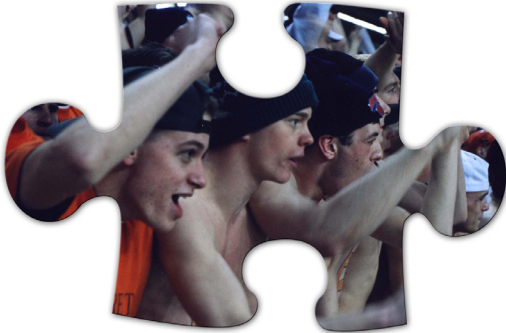


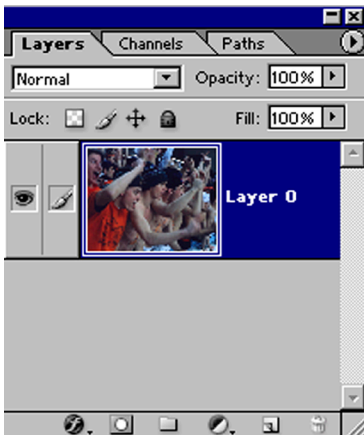
# Photoshop

## Image in Shape



*Note: Before beginning the tutorial, make sure to follow the digital imaging guidelines listed in the 2006 YearTech User's Guide. Verify the image is the correct resolution, size and mode.*

1. Open the photograph in Photoshop. File > Open and find the file. Make sure there is only one layer in the file. If this has not been done, Layer > Flatten Image.



2. Open the Layers palette, Windows > Layers, double-click on the word Background Layer in the Layers palette and it will change into Layer 0.

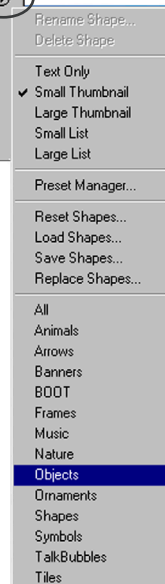
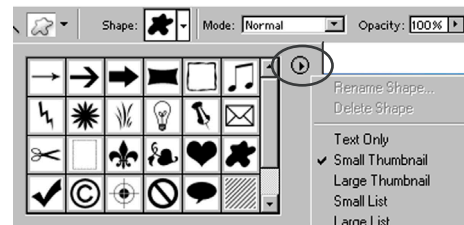
3. Go to the Layer menu, to New Layer.



Custom Tool Option Bar

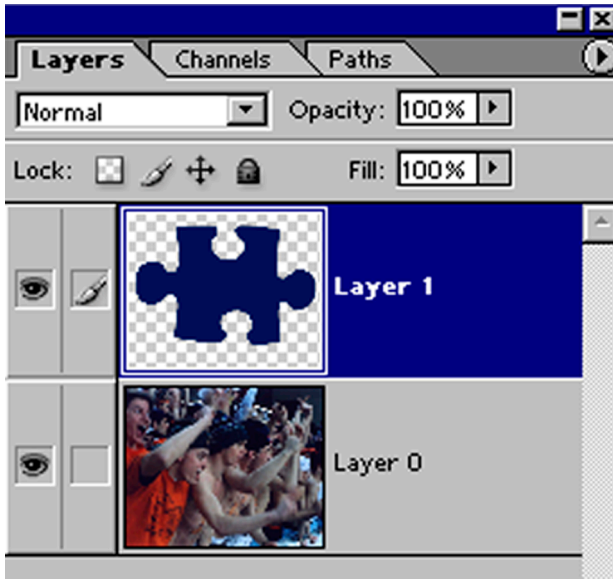


4. Select custom shape tool in the custom shape option box located at the top, make sure the third option for a shape is selected. See screen shot above. Click the drop down menu to see all the shapes available. To load more shapes, click the pop-out menu and choose Objects. (This is the category that has the puzzle pieces. Any category can be used depending on your needs.) Four different puzzle shapes should appear as choices for shapes. Select one of the shapes and draw over the photograph. You should be on the top new layer not on the same layer as the photograph.



# Photoshop

## Image in Shape



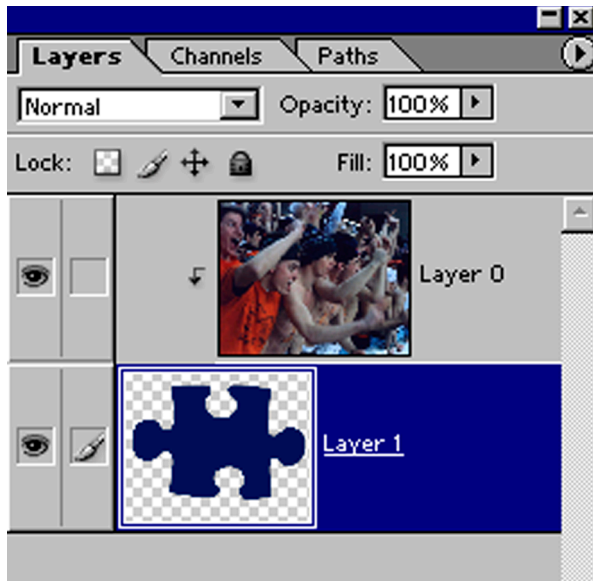
5. After you create the shape on the New Layer, drag Layer 1 to the bottom. The photograph should be covering the shape.

6. Select Layer 0, go to Layer > Group with Previous (Photoshop 7) or Create Clipping Mask (Photoshop CS and CS2).

The last screen shot should be how your layers look after this process.

7. Go to Layer > Flatten Image and Save As a Tiff or Jpeg file. In InDesign or PageMaker, go to the File > Place to place the graphic file.

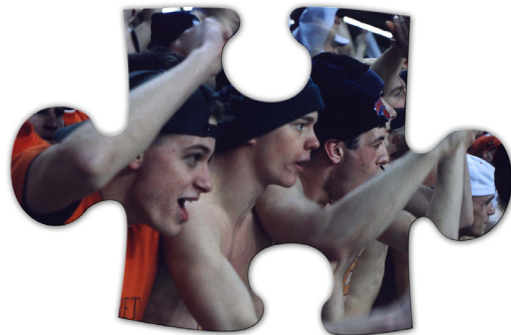
*Note: This can be used with any Custom Shape. You could also make your own custome shape.*



*Same instructions using a Star shape instead of Puzzle Piece.*



*Same instructions using a Heart shape instead of Puzzle Piece.*



*Finished Puzzle Piece*